



# Eynsham

**‘Green’ Eynsham  
is a haven for the  
living creatures we  
share the planet with.**

**(See pages 6-7.)**



Photo by Peter Taylor

## Village Buzz

### Community resilience and a Community Emergency Plan for Eynsham

by Anna Collins

Whilst it was a relief that the latest winter storm, 'Goretti', passed by without extreme impacts in the Eynsham area, the news featured many communities that were heavily affected, including thousands of properties left without power. Storms, floods or other unexpected events can happen, and it's a good idea to keep some useful essentials at home if possible, just in case (for example, non-perishable food, bottles of water, torches and a battery/wind-up radio).

Following discussion with the Parish Council in December, a small group of Eynsham residents will be starting work in late January/February on a Community Emergency

Plan for Eynsham. The aim is to develop a simple plan which helps to identify local resources and how we might coordinate with emergency services in response to an emergency or disruptive event, such as flooding, wildfire, snow, extreme heat, long-term loss of power or water, or a major incident.

We would love to hear from interested individuals or groups who would like to get involved, and/or who have ideas about useful resources, skills and so on. Please do reach out to the team on [eynshamcommunityresilience@gmail.com](mailto:eynshamcommunityresilience@gmail.com).

### A new home on Mill Street

by Mandy and Angie,  
*Greens Funeral Services*

They say that moving is the second most stressful thing you can do in life and, after our recent move to Mill Street, we are inclined to agree! After many years at our old premises, it was

time to move Greens Funeral Services to a more suitable site.

Our new office at Mill Street was originally purchased during the summer of 2025, but it took several months to renovate and decorate the office. The move happened alongside an expansion of our Witney premises. With both sites now modernised and updated, we are much better able to support families in our care.

Like anyone moving house, it is a time for reflection. I am very fond of our old site, but it is really the people who work there that make a place special. Our caring team of people who help bereaved families are the glue that holds the company together – and our values of care, compassion and professionalism will go with us to our new office.

Our Mill Street office is a calm, informal and friendly space for clients to visit. Our lovely staff are always there to help you, and you are most welcome to just pop in.

## EYNSHAM: A HEALTHY AGEING HUB

Eynsham has been identified as a 'Healthy Ageing Hub' and is now in partnership with the Oxford University Institute of Population Ageing, with funding from the Helen Hamlyn Trust. The aim is to develop initiatives, and support existing services, that improve the quality of life, longevity, and wellbeing for the elderly residents in our village. Funding has been secured for the next three years, starting January 1 2026. During this period a research team from the Institute will measure the impact of the scheme. There are two other Helen Hamlyn Hubs in Oxfordshire (Chipping Norton and Cutteslowe) taking part in the study.



There are numerous active groups and charities already supporting the elderly as detailed on Eynsham Online and in Eynsham News. The Hub has already identified, and is engaging positively with, six of them; there is scope for others.

- **BUSINESSES:** Is your local business interested in supporting or partnering with the Helen Hamlyn Hub Eynsham? I am seeking collaborative opportunities that align the Hub's mission to your corporate social responsibility of benefit to the wider community.

- **VOLUNTEERS:** We urgently need more volunteers, even on an occasional basis. Volunteering offers many benefits, including a sense of pride, meeting new people, learning skills, boosting wellbeing and enhancing your CV.

More to follow soon but, in the meantime, do get in touch with me if you'd like to hear more about the Hub.

**Mark Johnson (Coordinator, Helen Hamlyn Hub Eynsham)**

**email: [hhheynsham@gmail.com](mailto:hhheynsham@gmail.com)**

*(Mark is an Eynsham resident and treasurer of the Monday Club; he is coordinating the Hub on a voluntary basis)*

## Village Churches

### One village, three churches

For a village, Eynsham is fortunate to have three churches—all three set in a central location and all three with halls that are available for community use.



St Leonard's Church

#### **St Leonard's Church of England, 21 High Street, Eynsham, Witney OX29 4HE**

St Leonard's is right on the Square, next door to the Red Lion. The main Sunday event at St Leonard's is at 10.30am, but there's lots more going on, too, which you can find out about at [stleonardseynsham.org.uk](http://stleonardseynsham.org.uk).

The Church Administrator is Louise Parker. She can be contacted on 01865 883325 or by email at [stleonards\\_stpeters@btconnect.com](mailto:stleonards_stpeters@btconnect.com).



Eynsham Baptist Church

#### **Eynsham Baptist Church, Lombard Street, Eynsham, Witney OX29 4HT**

The Baptist Church is only a short walk from St Leonard's, down Lombard Street by the Co-op. The big iron gates and the walk up to the church are very imposing, but hide a particular piece of history. Baptists were once 'outsiders', non-conformists, and they were banned from having too much of a public profile. Eynsham Baptist Church is one of the few remaining chapels that still have the so-called 'walk behind the houses', where the church was built half-hidden from sight.

The main Sunday event at the Baptist Church is at 10.30am. There are more details at [eynshambaptistchurch.co.uk](http://eynshambaptistchurch.co.uk). To book the church hall, call 07554 012535 or email [rccarley@outlook.com](mailto:rccarley@outlook.com).



St Peter's Church

#### **St Peter's Roman Catholic Church, Abbey Street, Eynsham, Witney OX29 4HR**

St Peter's is a bit more tucked away, but it is still close to the village centre. Walk down Lombard Street, then go straight down Abbey Street. You will see St Peter's just round a bend in the road. Sunday Mass is at 10am.

For more details, call 01865 881613 or go to [stpeterseynsham.org.uk](http://stpeterseynsham.org.uk). The 'Tolkien Room' is available for hire; call 01865 423655.

#### **Father Martin Flatman, a retired priest, has these thoughts on Lent 2026, which starts in February and ends in April:**

'When I worked at Oxford Brookes University, I was surprised how many people who rarely, if ever, went to church talked about what they were giving up for Lent. Chocolate deprivation was their usual choice—and, boy, didn't they find that difficult!

'Christians nowadays tend to stress something they might take on, like giving a bit more to a good cause, and originally that was what Lent was—a time when you ate less, prayed more and tried to do something more to help others. Lent begins on 18 February this year, so maybe you might like to consider helping the homeless, supporting a hospice, befriending a lonely neighbour or looking to help further afield, with help for Gaza or Ukraine.

'But you might prefer to think about the day before Lent: Pancake Day—yummy! I prefer the term Mardi Gras,

which means 'Fat Tuesday'. However, the other word for the day before Lent begins is a much more familiar one: Carnival. From the Latin *carne vale*, it actually means 'Goodbye meat', and it marks the last day of indulgence before the start of Lent. Perhaps the most important meaning of Lent for all of us today is Goodbye Winter and Hello Spring!

'Ash Wednesday is the first day of Lent. On this day, many Christians go to church and have a little bit of ash put on their head to remind them that all of us begin as dust and end as dust, so we need to work out how best to use the time in between.'

### **Eynsham News—your news**

Eynsham News is a community newsletter, delivered free to every household in Eynsham parish every two months. It would not exist without your input; it is both for you and by you. Please send us your ideas, news, views and events by emailing [editor@eynshamnews.org.uk](mailto:editor@eynshamnews.org.uk). You can also write to us via Eynsham Library; your letter (marked 'Eynsham News', please) will be kindly passed on to us.

**The deadline for material for our next edition is Sunday 1 March.**

### **Come and join the Eynsham News team!**

The team of volunteers who run Eynsham News is a small one, comprising: Peter and Sarah M, the editors; Gill, who does a final proofread; David, the designer; Sarah R, who is responsible for ads and sponsorship; Mary, the treasurer; and Sue, who manages the mammoth distribution process.

We need more help! Peter will soon be leaving the team and, in order to keep Eynsham News going, we are looking for several people to join the editorial team, and we need another designer, too. The bigger the team, the more the work can be shared out and the less demanding it is on our time as individuals.

It is creative, engaging work that we know serves our community well. If you would like to find out more or offer your help, please email [editor@eynshamnews.org.uk](mailto:editor@eynshamnews.org.uk).

## Village History

Eynsham has a long and rich history spanning prehistoric, Roman and medieval times right through, of course, to the present day. Eynsham Museum is a fascinating repository of artefacts and information about the history of the village and its surroundings. In this and future issues of Eynsham News, with thanks to the Museum, we will introduce you to some intriguing facts about this place we call home.

### Firstly...about the Museum

Eynsham Museum's full name is Eynsham Museum and Heritage Centre. Located in the Bartholomew Room in the Square, it was established in 2021 and is run by volunteers.

After a lot of hard work, the Museum opened to the public with a series of special exhibitions: Eynsham's Lost Railway in 2023 and 2024; Rural Eynsham in 2025; and the photographic exhibition Eynsham Past and Present in 2024 and 2025.

In September 2025, the Museum's permanent exhibition, Eynsham from Prehistory to the 20th Century, was launched. Situated in the upstairs gallery of the Bartholomew Room, this exhibition runs alongside Eynsham Past and Present, which is in the downstairs gallery.

The Museum is free to visit, and normal opening hours are weekends and bank holidays (excluding Easter Sunday), 11am-4pm. *Note:* the Museum is currently closed for its winter break; it will reopen in spring. For the opening date—and to explore more about the history of Eynsham and about the Museum—go to [eynshammuseum.org.uk](http://eynshammuseum.org.uk).

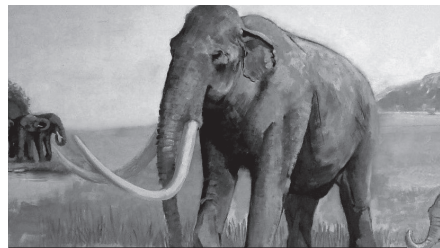
### Prehistoric Eynsham: Steppe mammoth tooth

by Rosemary Parrinder

In the permanent exhibition at Eynsham Museum, there is one of the biggest teeth you may ever see! It came from a small specimen of a prehistoric Steppe mammoth that lived here 200,000 years ago, during

the Lower Middle Paleolithic period (what we often call the Stone Age), a time when chipped stone tools began to be used.

The climate at that time was warm (being between two Ice Ages). The Steppe mammoth, an ancestor of the Woolly mammoth, lived on open grassland and in woodlands with rivers flowing through. It grazed on grass, and browsed on bark, leaves and twigs. It would have stood two to three metres tall at the shoulder.



A Steppe mammoth. Painting by Katherine Cropper and reproduced with her permission



Cave lions depicted in Chauvet Cave, France. Image courtesy of Wikimedia Creative Common

The mammoth tooth in the Museum was discovered at Dix Pit, just down the road in Stanton Harcourt. Some 140 tusks and 188 molars were also found there, along with parts of skulls, and many other fossils of elephants, wolves, bears, cave lions, horses, deer and bison. Flint tools made by Neanderthals, who were early humans, were also uncovered. What a different world it would have been to the world we know today!

### A hundred years of Hill End...

by Rebecca Upright

'I remember Hill End!' is something we hear so often from people of all ages. We love to hear about these cherished childhood memories.

A visit to our much-loved outdoor education centre has made a lasting impression on generations of children from Oxfordshire and beyond—we estimate at least a million people and counting!

Hill End was established in the 1920s as a pioneering outdoor school

by the philanthropic Ffennell family, who brought the first schools to the countryside by charabanc from what were then the poorest urban areas of Oxford city.

Hill End is still providing priceless experiences and memories today. We welcomed in the region of 24,000 visitors last year for a huge range of exciting nature-based outdoor activities. We stay true to our founding legacy, and work with a hugely diverse range of schools and charities to target those who need this most.

This year, we are celebrating 100 years since the first schools visited in 1926. We would love you to join us in a year of special activities. Sign up to our newsletter to stay connected with our exciting centenary activities and volunteering opportunities (use the QR code below or go to [tinyurl.com/3cxvcy25](http://tinyurl.com/3cxvcy25)). Enter our 'Design a 100-year logo' competition—for schools and families with children 4-12 years—judged by children's illustrator Korcky Paul. Prizes to be won!



Korcky Paul by Korcky Paul

Hill End is a small charity that receives no statutory funding. We rely on our visitors and friends to keep running and thriving for the next 100 years. For dates for your diary, go to [hill-end.org/activities/upcoming-events](http://hill-end.org/activities/upcoming-events). Thank you for your support!

### ...and a special roundhouse

Schools visiting Hill End recently will have noticed something remarkable: a new traditional roundhouse.

Every part of the structure tells its own story. The chestnut timber frame forms a strong, beautiful skeleton. The walls, woven from hazel wattle

and coated with Hill End daub, bring warmth and texture. Split and shaved chestnut doors, pinned carefully with oak and chestnut, open beneath a water reed thatched roof, all shaped and crafted using traditional hand tools—the drawknife, side axe, froe, and leggett. These ancient techniques give the roundhouse its authentic character and a tangible sense of history.



The wonderful roundhouse at Hill End

Hill End tutor Jon Abson, who runs history days, says, ‘This fantastic building will help children to step back in time and experience history through hands-on learning. Inside the roundhouse, children can gather around the central fire, listen to stories, and take part in practical activities such as grinding grain, weaving, or crafting tools, deepening their understanding of early human settlements and community life.’

## A year in the life of North Leigh Roman villa

by Matthew Lee

In 2025, the Roman villa’s volunteers welcomed more visitors than ever—more than 2200 people—to see its splendid fourth-century mosaic floor.

Visitors kindly donated more than £1000 to help to improve the site. And, thanks to English Heritage, the 200-year-old cottage can be used once again, the building protecting the mosaic floor has a new roof and windows, and work is underway to stabilise the exposed Roman remains.

Two new benches were provided by Blenheim Palace and a volunteer painted panels to show how the decorated wall plaster in the dining room (where the mosaic lies) might have looked in the villa’s heyday 1700 years ago. Another volunteer has begun an ambitious tapestry project and is embroidering an accurate representation of the surviving

mosaic. Community members are welcome to participate and to add their ‘stitches in time’ to this tapestry as it is being worked on. Digital technology has been embraced, too, with a competition in the digital construction game Minecraft to show how the villa would once have looked. The winning entries will be shown on site later this year.

Originally, the Roman villa was the heart of a large working farm. The Romans were responsible for introducing many plants to Britain that we take for granted today. To highlight this important aspect of our Roman past, ecology and gardening-minded volunteers are carefully planting species that first arrived with the Romans.



Roman villa volunteers



Volunteer Kerry works on the embroidery

**Of course, history encapsulates so many facets of life. Traditions are one. Here, we see that wassailing, though dating from Anglo-Saxon times, is still a living custom in contemporary Britain—including in our village!**

## Wassailing

by David Knight

Here’s to thee, old apple tree.  
Long may thee bud  
and long may thee blow  
and long may thee bear apples enow.  
Hats full, caps full,  
three cornered sacks full  
and my pockets stuffed full, too.

With these words, the 100+ wassailers gathering at Eynsham’s

Peace Oak Orchard burst into noise with pots, pans, whistles and drums. The racket was designed to scare away the pesky bad spirits that would try to ruin this year’s apple harvest, whereas the libations of toast and cider proffered earlier by the Mistress of Wassail encouraged the good spirits to grant a bountiful harvest.



Noise-making in the Peace Oak

With a roaring fire and cauldrons of mulled cider—and boosted by the ranks of Eynsham Morris and the Community Choir—the good folk of Eynsham enjoyed drinking, singing and racket-making amongst the apple trees. And thus continued the long tradition of wassailing, which was normally held on the old twelfth night of 17 January in the pre-Gregorian calendar. The West Country remains the hot spot of wassailing where shotguns are fired into the trees.

What the 107-year-old Peace Oak made of the kerfuffle around its feet, who knows!

## Mulled apple juice—in the wassailing spirit

by Sarah Medina

Key to the merry-making of wassailing has always been the enjoyment of apple-based foods and drink. It isn’t too late—or warm!—to make your own mulled apple juice at home. Here’s a simple recipe for six people that is suitable for young and old. *Wassail!*

### Ingredients

1 75cl bottle unsweetened apple juice  
1 cinnamon stick  
2 cloves  
Strips of orange peel  
Sugar or honey to taste

### Method

Bring the juice, cinnamon, cloves and peel to a slow simmer in a saucepan for about 10 minutes. Add sugar or honey to taste.

## Green Eynsham— Village Habitats

### The Peace Oak

The Peace Oak's name refers to an oak tree that was planted in November 1919, one year after the armistice that ended the First World War. Growing in a two-acre field off Cassington Road, with its entrance through Cobbetts Close, it is owned by the Peace Oak Association.

The Peace Oak Association has more than 100 members, who pay an annual subscription of £10 for one person or £15 for a family. Members contribute in many ways to looking after and developing the Peace Oak site, and some members also have small plots for growing vegetables. The site has mature trees, an orchard, wildflower meadows, a pond, a small vineyard, willow creations and more.

There are regular field days at the Peace Oak, when people gather to mow the grass, weed around the pond or the young apple trees, and sow wildflowers. There are plenty of activities which don't involve heavy work, too—including bringing down coffee and cake, counting slow worms, lighting the bonfire, providing crumpets and helping at events.

Special events happen, too, as you may have seen in previous issues of Eynsham News. They include wassailing (see page 5), Apple Day and celebrating the winter solstice (the shortest day of the year).



This winter's solstice celebrations happened on 21 December 2025. Peace Oakers gathered around a camp fire to watch the yule log burn! The actual winter equinox was at 3.03pm, so they marked the specific point in time when the North Pole reaches its maximum tilt away from the sun! There was mulled wine and a non-

alcoholic punch, and Christmas cake and mince pies. Candles and lanterns were lit as dusk approached. To be repeated in 2026!

You can visit the Peace Oak site freely, if you would like to check it out. If you want to join up, find the Peace Oak on Eynsham Online.

### The Nature Recovery Network

by Anna Parrinder

Did you know there's a thriving Nature Recovery Network (NRN) in and around Eynsham? Last year, Long Mead Foundation and the NRN leased 54 acres of floodplain meadow, in addition to the 96 we have already taken on for direct community restoration to species-rich, flood-resilient wildflower meadows. The network grew more than 7000 wildflower seedlings, planted approximately 5000 plants and more than 1km of hedge—bringing together over 500 community members to make it all happen!

NRN regularly monitors local wildlife and water quality, and we run year-round workshops, walks, and surveys to help local people learn from experts how to recognise and protect their own natural environment.

If 2026 is your year to live more healthily, help your local environment, or simply step away from the gloomy news cycle and take some positive real-world action, here are some easy ways to get started, and all right on your doorstep.

**Bird Survey Walk, 7 Feb:** Kick off 2026 with NRN's bird survey group and learn to recognise our most common birds alongside local experts.

**Weekly Plant Propagation Days,** Wednesdays. Get hands on, growing rare wildflowers that support the network's meadow restoration projects.

**Hedgelaying Weekend Workshop,** 21-22 Feb. Discover the ancient craft of hedgelaying in this in-depth, expert-led weekend course.

**Wild Arts: Invertebrates,** Sat 7th March. Blend science and creativity at Mill Street Arts as you study, identify and artistically capture invertebrates

on paper.

Register for events at bit.ly/45amXYT. Join the Nature Recovery Network at nature-recovery-network.org.

### Eynsham allotments

by Peter Taylor

Down on Wharf Road, opposite the Siemens factory, there are two fields of allotments, with 140-plus plots in all. The fields are provided by the Parish Council, but the allotments are run by the plot holders themselves, under the name of the Eynsham Allotment Association.



If you are serious about 'growing your own', you can find the digital application form for an allotment on Eynsham Online. There may be a short waiting list, depending on the time of year, but waiting times are very short now compared to how they were during Covid. Before you apply, please read the various bits of advice. Having an allotment is quite a commitment!

There will be an Open Day at the allotments in the summer. Save the date: Saturday 12 July.

### Eynsham Garden Club

by Nick Clapton

Do you want to meet gardeners, find encouragement and learn new skills?

Eynsham Garden Club was founded in 1981 by people with a broad interest in gardens and gardening. There are monthly meetings in the Village Hall and an annual plant sale in the Market Square in May. Meetings are on the second Wednesday of the month in the Village Hall at 7.30pm, but please check the events page on Eynsham Online to confirm the details.

New members are always welcome and will join an experienced and friendly network. Find out more at [eynshamgardenclub.co.uk](http://eynshamgardenclub.co.uk).

## A colourful winter

by Dianne Gull

Many people think that gardens in winter are drab and dreary, but gardens can be full of late winter colour: red-flowered hellebores, white snowdrops and the small iris reticulata in a whole range of blues. Winter aconites and primroses provide a spectrum of yellows, from pale to golden, and crocuses are renowned for their rainbow range.

The National Garden Scheme is a small charity which, last year, raised nearly £4 million to support a range of medical charities. Two gardens in Cumnor—6 High Street and 23 Hids Copse Road—will be open on Sunday 8 February, 2-5pm, as part of the NGS Snowdrop Festival. Both gardens also have a whole range of evergreen shrubs of different shapes and sizes and with different coloured leaves. What's not to like?

A £5 entrance fee covers both gardens. Children can go free, and dogs on leads are allowed. So do come and have a look around, knowing that your contributions will be well-used.

## Village Volunteers



Roger holding his well-deserved diploma

## Croquet England recognises Eynsham croquet player

by Sandra Jinks

Roger Booth joined the Eynsham Croquet Club in 2016, looking for a new challenge after overcoming a serious illness. Since then, he has become one of the key members of the club, taking on many roles and responsibilities.

Roger's energy and enthusiasm have been key in progressing several initiatives, including sourcing a gazebo with the club's logo and branding. Not only does this help to keep the weather at bay on a draughty

field, it is used to promote the club in the locality. Latterly, he was key in helping the club to fund a small clubhouse, which he helped to construct and equip internally. This is now a major part of club activities, and it has helped to expand club membership.

Roger developed a three-year plan to improve the quality of our lawns, which have clearly improved as the plan has panned out. He is currently addressing the challenges presented by the winter flooding. He has attended courses in lawncare and has become the nearest thing the club has to a lawn expert.

In addition to his role as chief groundsman, Roger is the club secretary, taking on yet more responsibilities, marketing the club externally, updating the club website and Facebook pages, and leading the club GC doubles team. He has been at the forefront of an initiative to organise taster sessions for local organisations, helping the club and the sport to become better known. His administrative abilities are second to none.

Thanks to Roger's invaluable work, the club has improved its competitiveness, and it now participates in three croquet leagues. During this time, his personal handicap has reduced—and he is now entering top class tournaments.

We believe that Roger's commitment and contribution to Eynsham Croquet Club deserves beyond doubt the recognition afforded him by the Diploma for Services to Croquet he has received from Croquet England.

## Who are the Eynsham Yarnbombers?

Many of us enjoyed the way the bollards in the Square and other objects were decorated this Christmas, as well as the distribution through the village of knitted and crocheted squares, each featuring one of the days of Advent.

But who are the people doing all this work to entertain us? The answer is that they are simply a group of friends who call themselves the Eynsham Yarnbombers. A few of them began back in the Christmas of

2023 with their knitted/crocheted bunting, and now they have gathered a few more friends—and give us an even bigger display.

If you look up 'yarnbombers' online, you will see that yarnbombing happens all over the world - but isn't it great that we have a group of people cheering up our village in this way. They are very happy that their work is so much enjoyed by so many of us, and were amazed how many people picked up the Eynsham Advent Trail worksheet from the library and the Market Garden, with hints as to where to find each of those Advent markers and spaces for children to draw the pictures they discovered on each one.



Now we look forward to the next way they will surprise us—but they are not telling what it will actually be! And if you want to know who these lovely people are, you will have to catch them in the act, for they are not telling, either!

## All in a good cause

by Tessa Hammond

The Rotary Club of Eynsham and District would like to thank all who gave so generously to the Rotary Santa and his Elves as they toured the village, and visited the primary schools in Eynsham, Long Hanborough, Cassington, Freeland and Standlake. Quite apart from the collection, the smiling faces of children and adults alike showed that Santa's presence was much appreciated by all.

The money will be put to good use in and around Eynsham, as well as supporting some of the most urgent aid requirements around the world. Recently, we have supported The Nook in Eynsham and Shelterbox, a charity started by a Rotarian, that responds to global disasters ([shelterbox.org/our-work/](http://shelterbox.org/our-work/)).



# We love our play areas

## Our play area management

The Parish Council is responsible for Eynsham's three play areas, situated at Dovehouse Close, Oxford Road and Old Witney Road. These are well-used and cherished by the community and we work hard to keep them open, safe and enjoyable for all.

## Day-to-day management

Our Open Spaces Committee oversees the management of our play areas. They meet quarterly (public attendance is welcome) and we post the minutes from the meeting on our website. Large scale projects tend to need oversight by our Finance Committee or the Full Council (also monthly meetings), while some of the smaller tasks might be handled quickly by our officers under our delegation policy. This is why some tasks can be completed faster than others.

## Inspections and Safety

We inspect the play areas weekly and quarterly: two of our officers are qualified to do this, but we also have the areas independently inspected annually.

Health and safety are the top priorities. If there are any risks, we cordon off equipment and, if absolutely necessary—although we dislike doing it—we close the whole play area until it can be made safe.

## Challenges

Play area management is not without

its challenges. For example, some of the equipment is old and made of wood, which means it can rot. The equipment is also complex in its engineering, so often we have to completely replace things rather than repair them. It can also make them complicated to remove.

The Parish Council has a tight budget. While we always allocate funds for play area maintenance, unexpected issues can be very expensive, exceeding the amount we have set aside. New equipment costs more than many people expect, plus we need to arrange for specialist contractors to repair, remove or install, which can take a while.

We estimate that we would need around £35,000 to fund new equipment at Dovehouse Close play area. This is money that the Parish Council doesn't have and there are limited opportunities to seek grant funding for this from national Government. We are exploring alternative funding to cover this cost, such as crowd-funding initiatives.

## We love our play areas

We do! Many of our Councillors played in these areas as children and care passionately about preserving these facilities for the next generations. We will keep residents updated on our progress at the play areas via our website.

*Any questions about play area management can be directed to [epc.comms@eynsham-pc.gov.uk](mailto:epc.comms@eynsham-pc.gov.uk).*

*Dates for  
your diary*

### Full Council Meetings:

**Tuesday 17 February 7.30pm**

**Tuesday 17 March 7.30pm**

**Annual Parish Meeting:**

**Tuesday 24 March 7.30pm**

*All meetings are held at the Village Hall. Public attendance welcome, in person or online via a link within the agenda. Check the website.*



These pages have been supported by Eynsham Parish Council.

Contact: [epc.comms@eynsham-pc.gov.uk](mailto:epc.comms@eynsham-pc.gov.uk)

or visit [www.eynsham-pc.gov.uk](http://www.eynsham-pc.gov.uk)

Find us on Facebook, X and Bluesky.

## A Note from the Chair



I'd like to publicise our fast-approaching Annual Parish Meeting, which will take place at the Village Hall from 7.30pm on Tuesday 24 March.

This is an opportunity for the Parish Council to explain what we have been up to for the last year and what we plan to do over the year ahead. We will also be sharing an overview of the newly approved budget for the Financial Year 26/27.

Once we've done our presentation, the evening will be about Eynsham! We are being joined by a fantastic cross section of the many other organisations that make our village such a great place. They will all be sharing information about their activities, plans and projects and attendees will be able to circulate the hall, looking at the various poster displays and talking to the enthusiastic people that keep all these activities running.

We will be providing refreshments and our Parish Councillors will be available for a chat if anyone has any local issues, questions or concerns about the village—or if you just want to find out more about how we work. While we don't have any current vacancies for Councillors, public participation is always welcome at our meetings. More details are available online.

Please come and join us! It's a lively, sociable evening and a great opportunity to gain an insight into many of the other organisations in Eynsham. Who knows, you might even find yourself signing up for a new hobby or becoming a volunteer!

If you're interested in having an area to display details about your organisation or local project, email us asap via [epc.comms@eynsham-pc.gov.uk](mailto:epc.comms@eynsham-pc.gov.uk). We only have limited space and will be assigning these on a first-come, first-served basis.

## From the Clerk's Desk

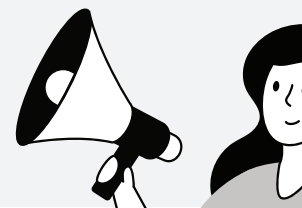


Eynsham's play areas are definitely the community's most popular outdoor spaces, but they represent just a small part of the green spaces that the Parish Council maintains. Many of you will have enjoyed a walk through the Fishponds, may have rested on one of the benches to take in the sights and sounds of the babbling Chil Brook or paused for reflection at our new dipping platform. Similarly, visitors to Old Witney Road play area may have watched how the Children's Food Forest Garden blossoms and blooms with its seasonal planting and fruit trees.

Both the Fishponds and the Children's Food Forest Garden are largely maintained by volunteer support, guided by committed Councillors who are passionate about these green spaces. And in 2025 they achieved so much! At the Fishponds, our Councillors and volunteers cleared and established a new footpath following a much-needed diversion and also oversaw the installation of a new dipping platform, as the old one was dangerous. At the Children's Food Forest Garden there have been various clearing and planting sessions, providing opportunities for young children to get involved with all the activities, building their understanding of growing fruit and vegetables. These efforts bring together people from all walks of life to share their enthusiasm and skills, to get outside and get active, giving something back to the community, while having fun too. Keep an eye on our website for how you can get involved with these activities in 2026; we always welcome the extra help!

Also, our Annual Parish Meeting in March will be a great opportunity to find out what is happening in the village and how you might be able to get involved. Come and join us!

## Meet a Councillor: Jovan Lee-Roles



### **Why did you want to join?**

I was born in the village, was educated in the village, and enjoyed many of the facilities that I took for granted when I was younger. Now I'm older, I want to ensure that the younger generation will have the same experience I did by taking on the responsibility of being a Councillor in the village I owe so much to.

### **What do you hope to achieve?**

I want to protect green spaces, keep our parks safe and open for children and parents, keep litter off the streets as much as possible and generally maintain the beauty of the village.

### **How easy was it to join?**

I was helped to understand what was going on by fellow Councillors and felt included immediately. Overall, it's a good process.

### **What has surprised you about being a Councillor?**

The complexity of how finances work within a council. Also, I was surprised at how complex negotiations can be with external contractors.

### **What issues do you care about the most?**

One of my top issues is limiting climate changes within reason. I am also passionate about maintaining village facilities and protecting green spaces.

### **What's your job?**

I work in IT as a process improvement technician.

### **Do you have any hobbies?**

I enjoy learning languages and hiking. I also love to cook.

**Contact Cllr Jovan on**  
[jovan.lee-roles@eynsham-pc.gov.uk](mailto:jovan.lee-roles@eynsham-pc.gov.uk)

## Events in February & March 2026



Our markets are open, come rain or shine!

### Eynsham Country Market

by Jane Dyson

Thank you to everyone for their support during a very busy 2025. Thanks, too, to the Red Lion for continuing to give us space in their garden for our shed.

Our first market of the year will be on Thursday 5 February, 9-10.30am, in the Square. We will return with our ever-popular freshly baked goods, a range of new season marmalades and plenty of homemade crafts.

ECM are planning several themed markets in 2026, including Valentine's Day and Easter, a spring plant sale and much more. Check Eynsham News or Eynsham Online for updates, or ask at the market on a Thursday. Follow us on Facebook and Instagram. Email [eynshamcountrymarket76@gmail.com](mailto:eynshamcountrymarket76@gmail.com).

### Eynsham Repair Cafe

by Sally, Liz, Anna and Alex (the Repair Cafe organising team)

The next Repair Cafe will be on Saturday 7 March, 2-4pm, at the Scout Hall. Repairs usually cover sewing, (creative) darning, small electrical repairs and tool sharpening. We also regularly offer wood repairs and bike repairs (small puncture, gear checks, etc.). Do check online (at [eynsham.org.uk](http://eynsham.org.uk) or on Facebook) closer to the date for the list of repairs offered by our amazing volunteers in March. Arrive early to avoid disappointment! Drinks and cakes are available while you wait.

### Music for an early spring afternoon

by Wendy Marks

On Saturday 7 March at 3.30pm, St Leonard's Church will play host to

an afternoon of music as the Freeland Orchestra joins forces with the West Oxfordshire Clarinets (WOC). The concert will offer a varied and accessible programme—perfect for a weekend treat.

The Freeland Orchestra will perform Beethoven's dramatic Prometheus Overture and Haydn's Symphony No. 104. WOC will perform the sparkling Die Fledermaus Overture by Strauss. A particular highlight will be a work by Catozzi, which features the rare and impressive contrabass clarinet—an instrument not often seen or heard solo! Tickets: £7.50 at the door (under-18s free).



The Ivel Trio

### A Night at the Museum

by Rowan Knowles

Flexicare is an Oxfordshire charity that has provided a specialised sitting service for families with a disabled child in Oxfordshire for 40 years. Funding donations are vital to Flexicare's work.

Flexicare is hosting the Ivel Trio for a magical 'Night in the Museum' classical concert. The trio, comprising flute, cello and piano, will perform amongst the dinosaurs in the stunning University of Oxford Museum of Natural History on Saturday 7 March. Doors open at 7pm for a 7.30pm start.

The performance will be followed by a drinks and canapé reception, included in the ticket price of £35. Tickets are available from [bit.ly/3LCHCOT](http://bit.ly/3LCHCOT) or from [events@flexicare.org](mailto:events@flexicare.org).

### A new quizzing year

by Jon Young

Following some 'cracker' Christmas quizzes in the village and a quiet start to January, when The White Hart took a well-earned break, things get back to normal in February and March. There are four quizzes in the village each month, covering everything

from general knowledge to entertainment, culminating with a special charity quiz at The Swan Inn, hosted by the ever-dependable Lynn and David. See details on page 11. Follow Eynsham Quizzers page on Facebook and on Eynsham Online.

### Eynsham Community Choir—a new term begins

by Sarah Medina

Do something new in 2026! After our highly successful pre-Christmas concert at St Leonard's Church, 'Sing We all Noel!' (which raised several hundred pounds for the Eynsham Food Bank and The Friends of St Leonard's), a new term of singing is upon us—and everyone is welcome!

There is no need to commit to performing in concerts, although they are tremendous fun. Above all, the community choir is about... community and singing. Come for a free taster session and see if it's for you.

Every Thursday to 26 March at the Baptist Church. 7.15pm refreshments; singing 7.30-9pm. This term's fee is only £40 when paid up-front or £7 per session, if paid weekly.

### Rotary Club fundraiser

by Tessa Hammond

We would like to invite you to our latest fundraiser in aid of all our local and international charities. Most recently, we have been supporting The Nook in Eynsham (bit.ly/3M6qOzH) and Shelterbox ([shelterbox.org](http://shelterbox.org)), who help provide aid for international disasters.



## And looking ahead... 'A Murder is Announced'

by Denise Richard

The Bartholomew Players' next production will be Agatha Christie's Miss Marple mystery, 'A Murder is Announced', 13-16 May, 7.30pm at the Village Hall. Price: £14 (no concessions) Tickets: [bit.ly/4bvWAAj](https://bit.ly/4bvWAAj); from Denise Santilli (07721 744020), [bart.players@gmail.com](mailto:bart.players@gmail.com) or Evenlode DIY; or on the door.



Supporting people through gardening and nature

## Bridewell Gardens Winter Wander

by Rachel Green

Bridewell Gardens will be open on 15 February, 10am-1pm, for people who would like the chance to see the garden site out of season. The cafe will be closed, but Bridewell wine and gifts will be on sale. Tickets cost £6 per person and include a mug of hot spiced apple juice to sip as you wander round the vineyard and walled garden. The Bridewell team will be here to answer any questions you may have. Wrap up warm! Dogs on leads are welcome. Tickets £6 from [bit.ly/3NMHtZw](https://bit.ly/3NMHtZw) or from the gardens on the day.

## Other Events

To have your event included in the next issue, email [editor@eynshamnews.org.uk](mailto:editor@eynshamnews.org.uk) by 1 March. If you run a regular event, please submit new copy.

**The White Hart General  
Knowledge Quiz**  
Wed 4 Feb, 8pm

**Eynsham History Group**  
Thurs 5 Feb, 7.30pm, St Leonard's  
Church Hall

Neil Wilson will speak on 'The Wreck of the Catacaqui'.

**NRN Bird Survey Walk**  
Sat 7 Feb, 9-11am, meet at the Talbot  
Inn (see p7)

**NGS Snowdrop Festival**  
Sun 8 Feb, 2-5pm, 6 High Street & 23  
Hids Copse Road, Cumnor. (see p7)

**The Red Lion General  
Knowledge Quiz**  
Mon 9 Feb, 7.30pm

**Kingsley Cafe  
Entertainment Quiz**  
Thurs 12 Feb, 7.30pm

**Eynsham Women's Institute**  
Thurs 12 Feb, 7.30pm,  
Eynsham Scout Hall  
Ruth from the CraftShed on stained  
glass. Have a go at making an item.  
Competition: An item beginning with S.  
Visitors welcome; £5 contribution

**Gatehouse Volunteers**  
Sun 15 Feb, 9am-1pm  
Please deliver labelled foods to 15  
Newland Street.

**Eynsham Society**  
Wed 18 Feb, 8pm, Village Hall  
Annual General Meeting and election  
of Officers and Committee

**Age UK Lunch Club**  
Fri 20 Feb, 12pm, Red Lion  
A chance to meet and eat in friendly  
company. Contact Sue to book your  
space: 07827 235 414

**NRN Hedgelaying Weekend Workshop**  
Sat-Sun 21-22 Feb, Long Mead  
(see p7)

**The Swan Community Quiz**  
(in aid of Helen & Douglas House)  
Mon 23 Feb, 7.30pm

**Eynsham Abbey Singers Concert**  
Fri 27 Feb, 4-5pm, St Peter's  
Catholic Church

**The White Hart General  
Knowledge Quiz**  
Wed 4 Mar, 8pm

**NRN Wild Arts—Invertebrates**  
Sat 7 Mar, 2-5pm, Mill Street Arts  
(see p7)

**The Red Lion General  
Knowledge Quiz**  
Mon 9 Mar, 7.30pm

**Eynsham WI 103rd Birthday Party**  
Thurs 12 Mar, 7.30pm,  
Eynsham Scout Hall  
Nicholas Gill: Songs of Gershwin.  
Competition: An item beginning with T

**Kingsley Cafe Entertainment Quiz**  
Thurs 19 Mar, 7.30pm

**Age UK Lunch Club**  
Friday 20 Mar 2026, 12-1pm, Red Lion  
Book through Sue: 07827 235 414

**The Swan Community Quiz**  
(in aid of Helen & Douglas House)  
Mon 23 Mar, 7.30pm

## Regular events

**Eynsham Community Choir**  
Thursdays, 7.15-9pm,  
Baptist Church Hall  
£40 for this term or £7 weekly on the  
door. (see p10)

**New for 2026! Line Dancing classes**  
Tuesdays, 7.30-8:30pm, Village Hall  
No experience or bookings needed; £7  
pp. Jess & Michaela, 07889 349695;  
[oxcountryld@hotmail.com](mailto:oxcountryld@hotmail.com)

**NRN Plant Propagation Days**  
Wednesdays; for info and to book in,  
contact NRN in advance on  
07816 675460.

**Eynsham Good Neighbour Network**  
EGNN exists to support anyone in need in the village. It has 3 branches:  
**Good Neighbours: 07443 564516**  
**Eynsham Car Scheme: 07469 764174**  
**Eynsham Food Bank: 07450 328530**  
Contact us, if you need help.  
For information, go to: [bit.ly/4aiNohD](http://bit.ly/4aiNohD)

### Need, hardship or distress?

The Eynsham Consolidated Charity can make money grants or help to provide items or services for those in financial need. The Bartholomew Educational Foundation makes money grants to people under 25 for books, equipment, travel, etc.

To enquire, in absolute confidence, email the Clerk, Catherine Barton: [eynshamcharities@gmail.com](mailto:eynshamcharities@gmail.com)

Eynsham News is published by a local, not-for-profit voluntary group, set up solely to produce a community newsletter of broad general appeal. Free delivery to every household is arranged by volunteers.

Local stories, snaps and snippets are always welcome – and corrections, too! Items submitted may or may not be included and will be edited.

Opinions expressed by contributors are not necessarily those of the News Group.

Inclusion of an advertisement does not imply endorsement of the product, service or event.

## The Team

**Editors: Peter Taylor and Sarah Medina**  
[editor@eynshamnews.org.uk](mailto:editor@eynshamnews.org.uk)

**Content Creators:** : Nick Clapton, Martin Flatman, Jon Young

**Advertising: Sarah Rushworth**  
[ads@eynshamnews.org.uk](mailto:ads@eynshamnews.org.uk)

**General Enquiries**  
[editor@eynshamnews.org.uk](mailto:editor@eynshamnews.org.uk)

**Printing:** Holywell Press  
[info@holywellpress.com](mailto:info@holywellpress.com)



**Details of all events were correct at the time of going to press, but may change. Please check with the organiser before attending.**

**Send your events news (about 70 words long) for our April/May edition (issue 79) before 1 March to [editor@eynshamnews.org.uk](mailto:editor@eynshamnews.org.uk).**



14039900282

If you would like to support us by advertising here regularly or as a one off, please email Sarah Rushworth at [ads@eynshamnews.org.uk](mailto:ads@eynshamnews.org.uk) for deadlines/prices.

## Classified Ads

### The Mala Touch

Therapeutic massage & reflexology – relief from chronic pain, fatigue & stress. Over 25 years' experience, intuitive, compassionate, fully insured. 07957 343889 / [thematouch.co.uk](http://thematouch.co.uk)

### P Bruno Car Repairs

Oxfordshire's friendliest, family-owned & run garage since 1989. Servicing and repairs for cars & light commercial vehicles. Class 4 MOT testing, collection and delivery service and courtesy cars. 01865 883413

### Top Power Wash Services

For all your exterior cleaning  
Roof cleaning. All power washing  
Gutter cleaning. Render cleaning  
Conservatory cleaning  
01865 507406 / 07340827550

### Greens Funeral Services

Established in 1866, Independent Funeral Directors. 01865 880837  
[mail@greensfunerals.co.uk](mailto:mail@greensfunerals.co.uk)

### Abbey Rentals

Residential Property Rental & Block Management Services covering West Oxfordshire. Private landlords wanted. For a free, no obligation discussion on renting out your property, contact Robin anytime...VAT Free Fees  
01993700009 / [abbeyrents.co.uk](http://abbeyrents.co.uk)

### Abbey Properties

Independent Estate Agents Selling homes in Eynsham since 1983. Unrivalled experience of the local property market.  
01865 880697 / [abbeyprops.com](http://abbeyprops.com)

### Cokethorpe Enterprises

A one-stop shop for your conference, away day, and team-building days of all shapes and sizes, advertising, sponsorship and sumptuous wedding venue. [cokethorpe-enterprises.co.uk](http://cokethorpe-enterprises.co.uk)  
01993 892338

### Pellmans LLP Your local solicitors

• Residential Property, Conveyancing and Leases • Wills/Probate/Trusts/Tax/Powers of Attorney - home visits available • Commercial Property, Conveyancing and Leases/Business/Companies.

1 Abbey Street, Eynsham OX29 4TB.  
01865 884400 / [pellmans.co.uk](http://pellmans.co.uk)

### Beech Court Nursing Home

"A home from home" for your elderly relations. 37 Newland Street, Eynsham, OX29 4LB. 01865 883611

### Rotary Club of Eynsham

is a friendly group who are determined to contribute to both local and international wellbeing. If you'd like to do more for your community, please come and join us.

Contact: [tessajhammond@gmail.com](mailto:tessajhammond@gmail.com)

### Zetica Limited

Geophysics on your doorstep. Check our website for details.  
[zetica.com](http://zetica.com) / [zeticarail.com](http://zeticarail.com)  
[zeticauxo.com](http://zeticauxo.com)

### Paton Financial Planning

Your local wealth manager – we specialise in pension planning, investment planning and protection. Fiona Paton Loader, [fiona.loader@sjpp.co.uk](mailto:fiona.loader@sjpp.co.uk),  
07780 566468 / [patonfinancial.co.uk](http://patonfinancial.co.uk)

### Eynsham Cellars

Award winning wine, beer, spirit and cider retailer. Carefully chosen selection. Free delivery. Sale or return & free glass hire for parties. 43 Mill Street.  
01865 884405 / [eynshamcellars.com](http://eynshamcellars.com)

### The Clean Oven Company

Eynsham based. Reliable friendly service  
Single and double ovens. Ranges hobs and extractors. We also clean BBQs  
Give us a call on 0737 9689804

### Evenlode DIY Eynsham's Tardis

Glass, timber, keys cut, tool sharpening, paint mixed, hardware, ironmongery, decorating materials, garden and pet supplies. 29 High St., Eynsham OX29 4HE  
01865 881392